



# Ageing Well

Live Life to the Full

## Masterclass 3 Navigating Aged Care

September 2021



Speakers:

David Fleming, General Manager Home Care,  
CatholicCare Sydney

Mary-Jane Rudd, Sales Manager,  
Catholic Healthcare



Ageing Well is a collaboration between:





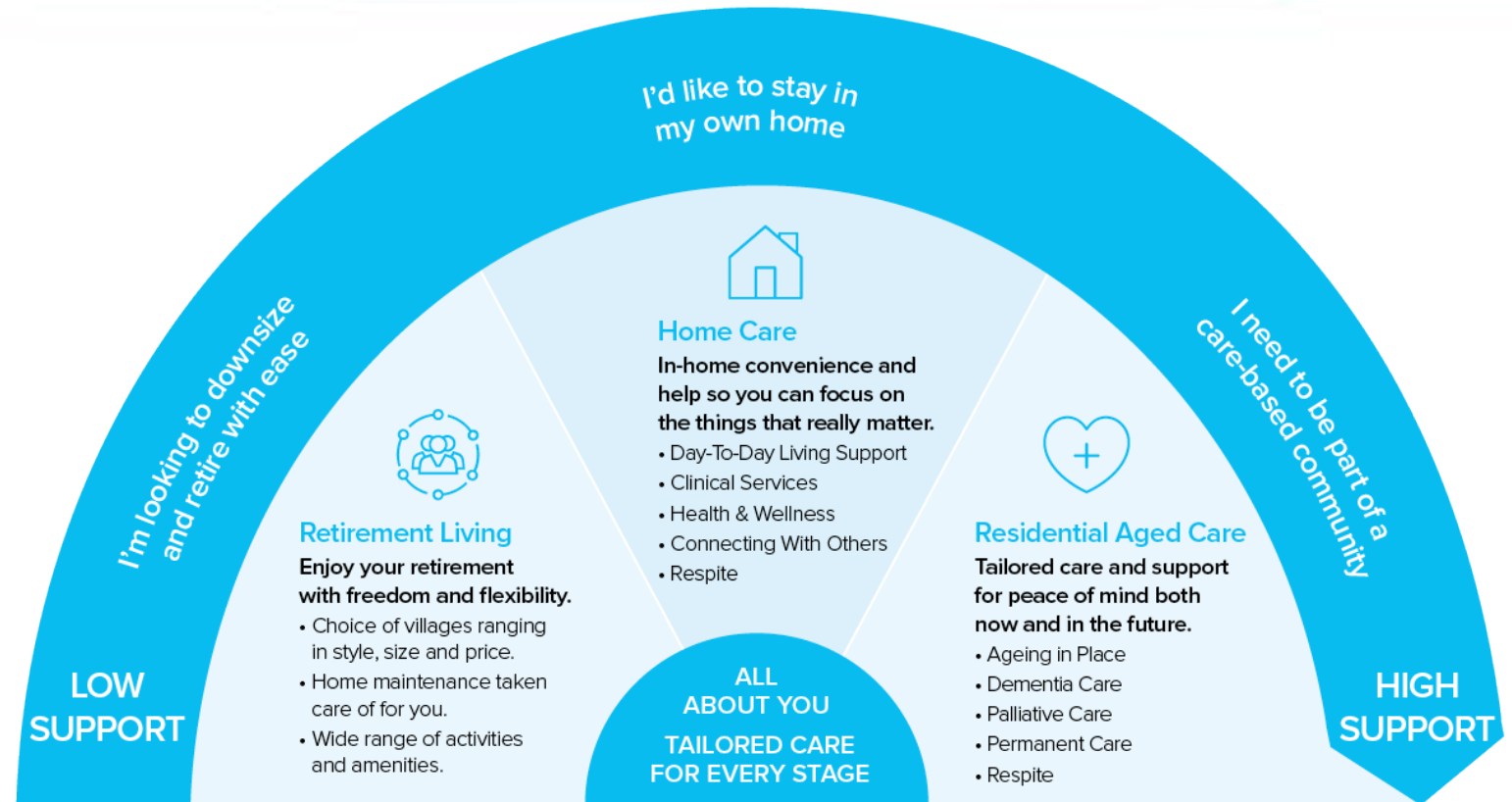
## Masterclass 3

**Navigating Aged Care:  
Let's talk about your  
choices.**

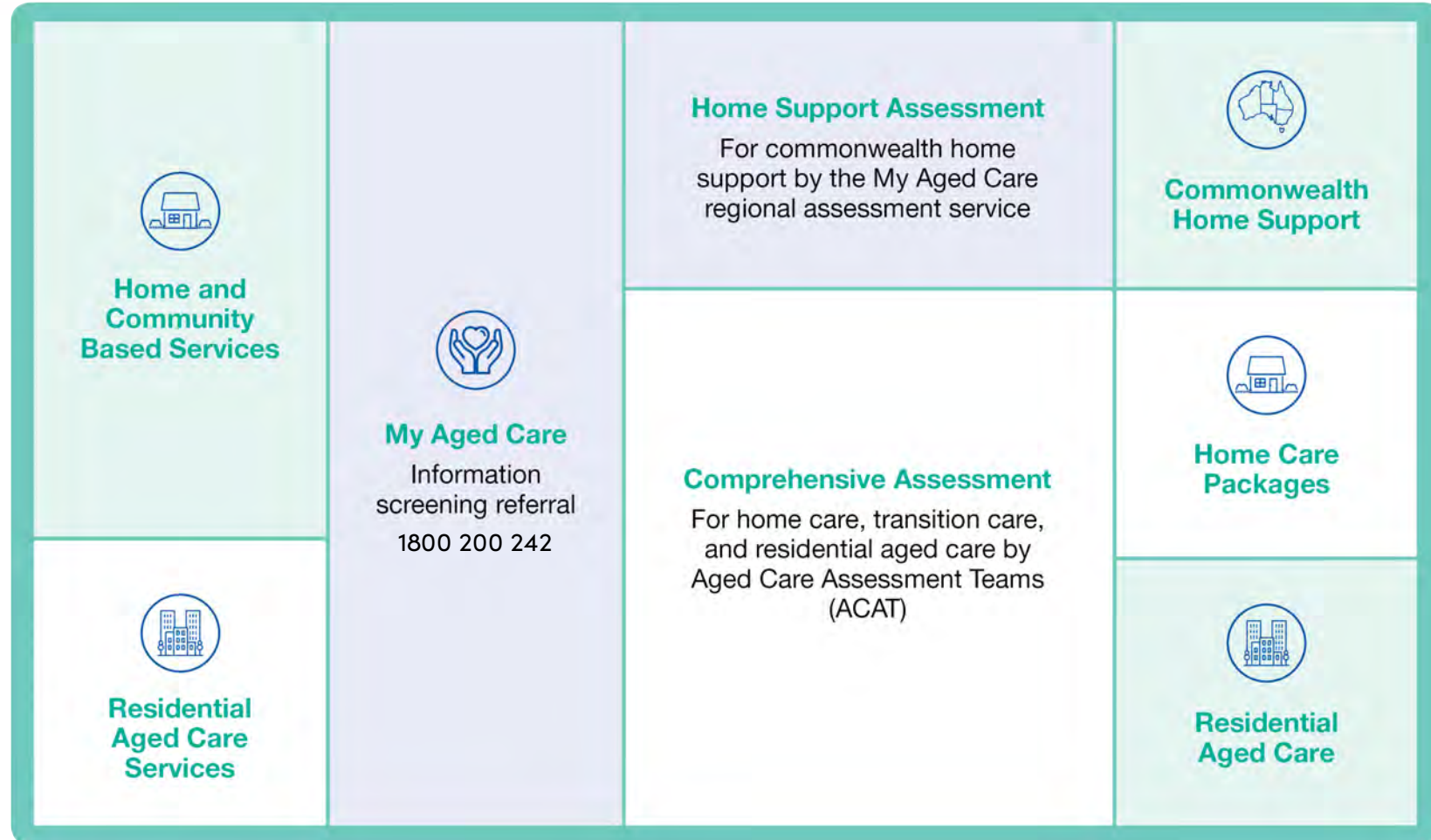
# Tailored care for every stage

We understand your lifestyle and needs are unique and will change over time.

That's why aged care is tailored and flexible for every stage of your life's journey.



# Getting started - The Aged Care Process



# The Aged Care Funding Approval Process



# What are my options – Home Care

**Fee For Service (Private Services)** – if you require immediate support whilst waiting for funding approval or prefer not to use a government subsidy at all.

**Commonwealth Home Support Programme (CHSP)** – entry level program for people with lower care needs.

## Home Care Packages (HCP)

- Enables clients to choose their provider
- Ideal for people with more complex care needs
- Four levels of subsidy based on an individual's assessed needs

HOME CARE PACKAGE (HCP)  
LEVELS AND ANNUAL SUBSIDY\*

LEVEL 4:  
High Level Care Needs  
Over \$52,000

LEVEL 3:  
Intermediate Care Needs  
Over \$34,000

LEVEL 2:  
Low Level Care Needs  
Over \$15,000

LEVEL 1:  
Basic Care Needs  
Over \$9,000

**COMMONWEALTH HOME  
SUPPORT PROGRAMME (CHSP)**

Entry level, ongoing or short-term support services

\*These figures are on an annual basis, indicative and are subject to change at any time. The maximum government contribution increases each year. The individual amount to be paid will depend on whether you are asked to pay an income-tested care fee.

# What is the journey – CHSP

**Myagedcare.com.au is a government website** and is the entry point for aged care information and services including:

- Types of CHSP services available
- Information on CHSP providers
- Your eligibility for services and government subsidies
- Your contributions to the cost of care

Wait times occur for assessment and for services to start so it is important to start the journey as soon as possible



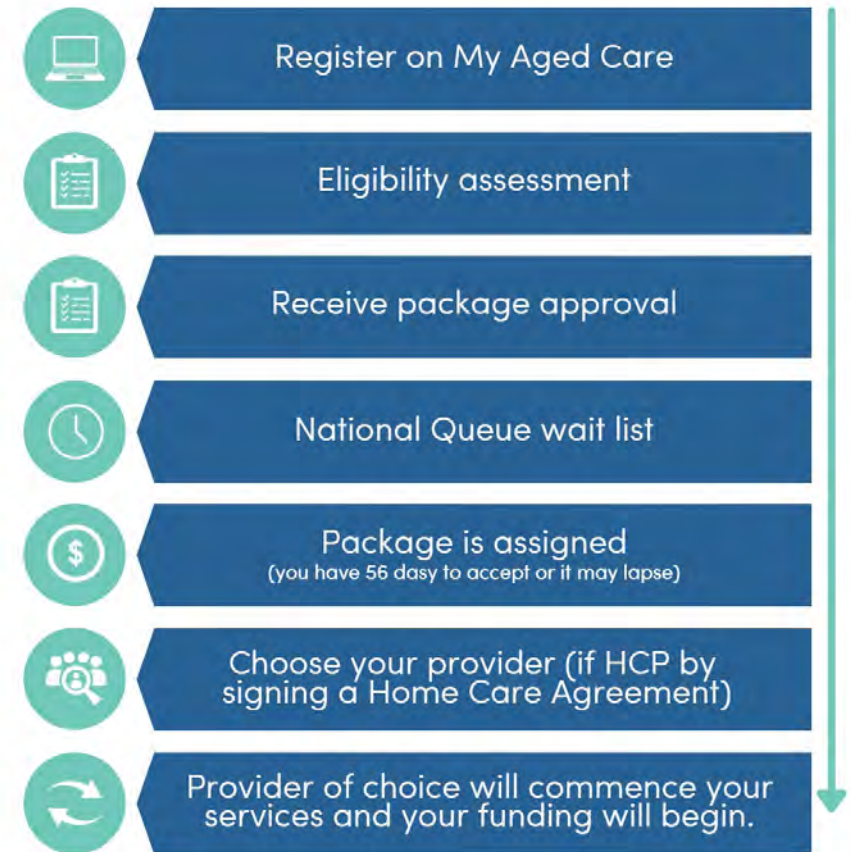


# What is the journey – Home Care Packages

**Myagedcare.com.au is a government website** and is the entry point for aged care information and services including:

- Types of Home Care services available
- Levels of Home Care Packages (HCPs)
- Information on Home Care providers
- Your eligibility for services and government subsidies
- Your contributions to the cost of care

Wait times occur for assessment and for services to start so it is important to start the journey as soon as possible



# What supports are offered – Home Care Packages

In home support so you can focus on what really matters



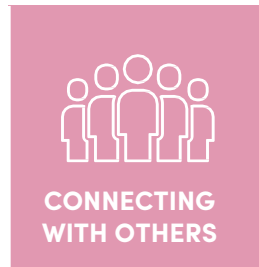
- Light housekeeping
- Meal preparation
- Personal care
- Home & Garden Maintenance
- Shopping
- Transport



- Allied Health
- Nursing Care
- Remote Support
- Help with medications



- Walking with Confidence
- Feel Fit
- Neck and Back Health
- Stepping On
- Posture Program
- In-home respite care



- Via technology
- Group outings
- Day Centres
- Volunteer home visits / calls
- Social support
- In home respite



- Help find meaning in your life's journey
- Trusted confidante
- Responding to spiritual needs





## Masterclass 3

# Navigating Aged Care: Retirement Living.

# Why choose retirement living

Celebrate retirement with flexibility and freedom



## CHOICE OF VILLAGES

- A range of villages across NSW
- Choice of style, size and price.



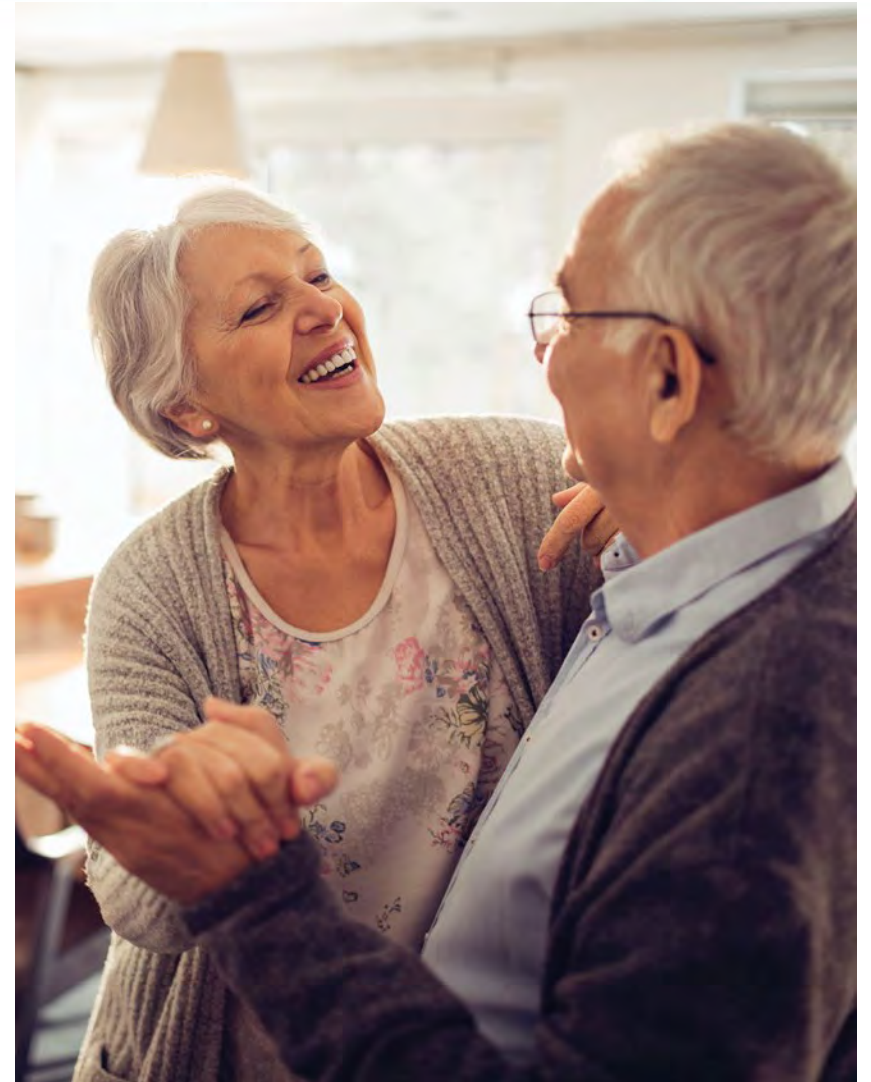
## LIFESTYLE & ACTIVITIES

- Downsize with ease
- Vibrant community
- Like-minded people
- Wide range of activities
- Community gardens



## HOME MAINTENANCE

We will take care of the maintenance for you!





## Masterclass 3

# Navigating Aged Care: Residential Aged Care.

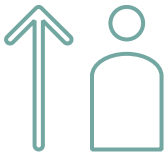
# Model of Care – We're all about you

YOU are at the heart of everything we do.

We work with you to develop a care plan that is tailored, flexible and suits your lifestyle and needs.



# Residential Aged Care – support and care



## AGING IN PLACE



## DEMENCIA CARE

Specialised homes,  
programs and  
activities.



## PASTORAL & SPIRITUAL CARE



## PERMANENT CARE

Individualised plans  
based on you and your  
needs



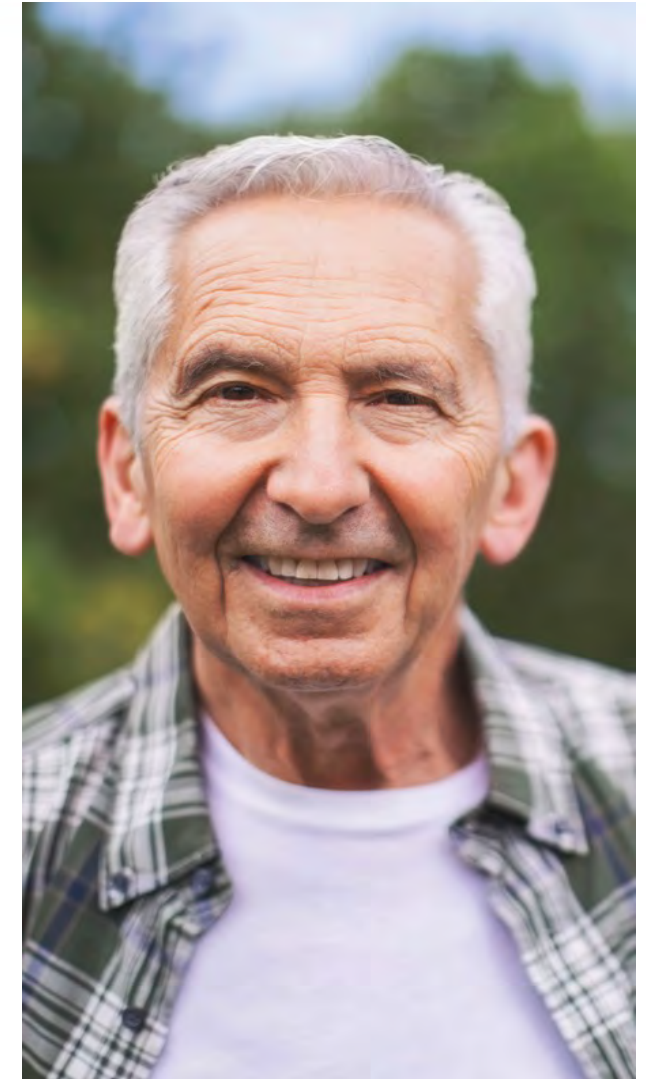
## RESPIRE CARE

Quality care as your  
carer takes a break or  
attends to personal  
matters.

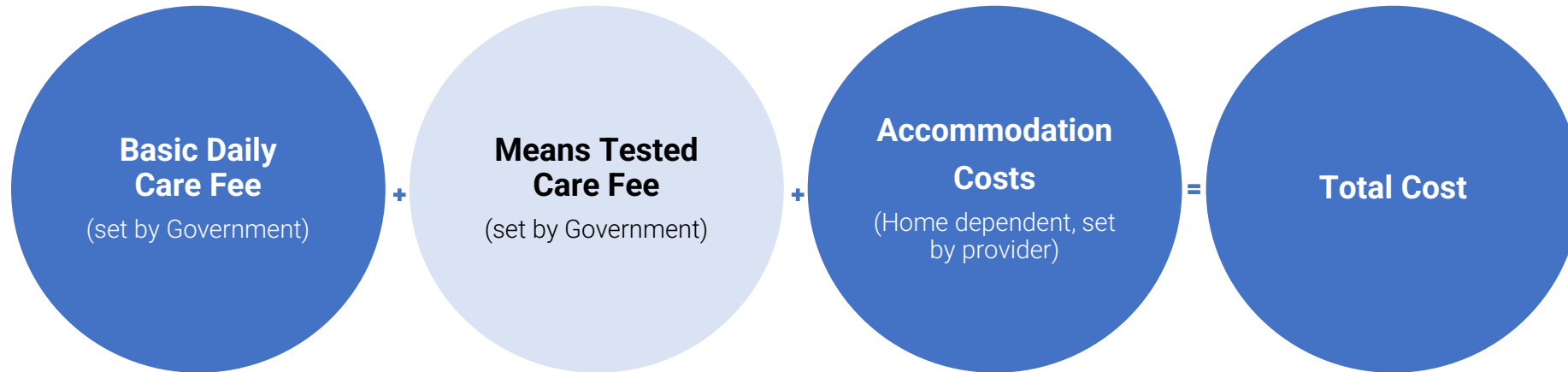


## PALLIATIVE CARE

Highly experienced  
clinical teams.



# Residential Aged Care – the costs



- This is based on 85% of your Centrelink pension.
- This covers clinical care, meals and basic services.

This only applies if your income or assets exceed the maximum threshold set by Government.

## **Payment options:**

1. Lump Sum Refundable Accommodation Deposit (RAD)
  2. Daily accommodation payment (DAP)
  3. A combination of the above
  4. Drawdown payment
- (Additional services may also apply)

*Always best to seek your own financial and legal advice*



# Residential Aged Care – journey

**Myagedcare.com.au is a government website** and is the entry point for aged care information and services including:

- Types of aged care services available
- Information on aged care providers
- Your eligibility for services and government subsidies
- Your contributions to the cost of care



The logo for Ageing Well is a stylized 'A' composed of four overlapping shapes in shades of blue, purple, and green.

# Ageing Well

Ageing Well is a collaboration between:

